

POLYPHAGOUS SHOT-HOLE BORER

WHAT IS A POLYPHAGOUS SHOT-HOLE BORER (PSHB)?

PSHB is a tiny invasive black beetle from Asia. It is smaller than a sesame seed but can have a devastating effect on trees.



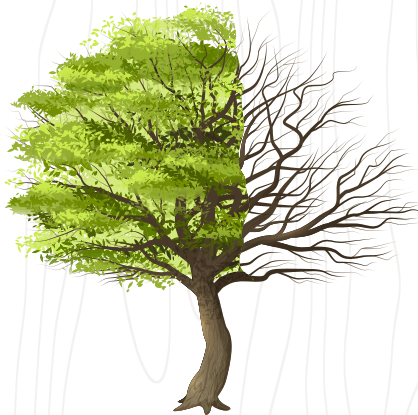
1MM



Firewood can move invasive species like the Polyphagous Shot-Hole Borer which can kill trees.

HOW DOES THE POLYPHAGOUS SHOT-HOLE BORER AFFECT TREES?

The beetle tunnels into trees and lines the tunnels with fungus. The tunnelling and fungus kills the tree by obstructing the flow of water and nutrients through its vascular system.



PROTECT THE TREES IN ALL OUR NATURE RESERVES FROM THIS BEETLE BY:



Only using firewood sold inside the reserve.



Only bringing in and using eco-logs or charcoal as an alternative to wood to make fire.



Not moving firewood to another location.

Report any signs of Polyphagous Shot-Hole Borer to pshb@capenature.co.za



@capenature1



@capenature



/capenature1

#ProtectBiodiversity

#LoveNature



CapeNature