

GROOTVADERSBOSCH NATURE RESERVE

ALL CAPENATURE RESERVES ARE "SAFE TRAVEL" DESTINATIONS IN TERMS OF COVID-19 COMPLIANCE.
REFER TO OUR 4 AND 5 STEP CHECK-IN INFORMATION SHEETS.



RESERVATIONS

087 087 8250



NATURE RESERVE

028 492 0001

(office hours)

082 496 2451

(after hours)



OFFICE HOURS

07h00 - 16h00

7 days a week



OVERNIGHT BOOKINGS

CHECK-IN

08h00 - 16h00

CHECKOUT

10h00

CHECKOUT TIME EXCEPTION:
Basic campsites A1-A5 ONLY

12h00



DAY VISITORS

CHECK-IN

08h00 - 16h00

CHECKOUT

18h00



GATE TIMES

07h00 - 18h00



Grootvadersbosch Nature Reserve has a magical, fairytale quality, leaving visitors with the lasting impression that they have stepped into another world. Hikers walk in the dappled light of the precious indigenous forest, and swim in the cool tea-coloured river water while shaded by ancient trees. Grootvadersbosch is one of the lesser known reserves in the Western Cape. For those who love its air of self-contained mystery, this is how it should be. Day walks, mountain biking trails, and the Boosmansbos Wilderness Area offer an array of challenges for those who want to immerse themselves in the Wilderness. This is an excellent birding destination with more than 196 bird species regularly spotted. Hikers are likely to bump into bushbuck and spot baboons and smaller animals. A rare highlight would be a sighting the forest emperor butterfly or a subspecies of the elusive ghost frog, as they can only be found in this forest. CapeNature offers a variety of accommodation options, from comfortable and well-equipped cabins to a range of camping styles, from basic to glamping.



FROM CAPE TOWN (N2 or N1):

Proceed through Swellendam and Buffeljags River. Approximately 1km after the BP garage (on the right side), turn left at the Suurbraak/Barrydale signboard. Drive through the little town of Suurbraak. Continue with the road. It will eventually become a gravel road. Go straight over the intersection, and continue until a T-junction. Turn left at the T-junction. Continue with this gravel road and keep left at a fork in the road (Grootvadersbosch direction signs present). Do not turn off, as the road ends at the entrance gate to the reserve.

FROM PORT ELIZABETH/GEORGE (N2):

Two kilometres before Heidelberg (Engen Stop), turn right at the Barrydale – Tradouws Pass signboard. Continue with this road (R322) that leads through the town. Do not turn off into any street. Continue straight through with the R322. Continue through town and over a railway crossing. The R322 eventually becomes a gravel road. Approximately 4km from where the gravel road started, turn right at the Grootvadersbosch sign on the R322. Continue with this gravel road and keep left at a fork in the road (Grootvadersbosch direction signs present). Do not turn off, as the road ends at the entrance gate to the reserve.

To view Grootvadersbosch in Google maps, go to <https://www.google.com/maps> and insert these coordinates: 33°59'08.4"S 20°49'24.7"E. Then select "search" for the map to display.



SELF-CATERING ACCOMMODATION UNITS



11 ECO-CABINS



3 CABINS WITH UNIVERSAL ACCESS
UNITS 1-3

2-BEDROOMED

7 4-SLEEPERS



DOUBLE
BDR 1



2X SINGLE
BDR 2

4 5-SLEEPERS



DOUBLE
BDR 1



SINGLE + DOUBLE BUNK
BDR 2



Built in 2016 and situated on a ridge, with forest on either side. The cabins are arranged in two rows, with the higher cabins having expansive views of the valley, while the lower cabins look on to indigenous forest. Built on an existing footprint, which used to be the site of the forestry staff accommodation, the cabins were made from reclaimed materials from the site to have a low impact on the area.



ELECTRICITY



SOLAR POWER



LOUNGE AREA



FIREPLACE



GARAGE

CABINS
1-3, 8-11



BRAAI WITH GRID

OUTDOOR
+ INDOOR



BEDDING +
TOWELS



SHOWER



EQUIPPED
KITCHEN



TABLEWARE



FRIDGE



GAS STOVE



MICROWAVE



COOKWARE



TOASTER



KETTLE



SCOLOPIA COTTAGE

6

2-BEDROOMED



DOUBLE
BDR 1



2 DOUBLE BUNKS
BDR 2

Scolopia is a wooden house located 500m from the reserve entrance on the edge of the indigenous forest and near the start of a day hike.



ELECTRICITY



LOUNGE AREA



FIREPLACE



BRAAI
WITH GRID



BEDDING +
TOWELS



SHOWER



EQUIPPED
KITCHEN



TABLEWARE



FRIDGE



ELECTRIC STOVE



MICROWAVE



COOKWARE



TOASTER



KETTLE

CAMPING & GLAMPING

3 CAMPING STYLE OPTIONS ARE AVAILABLE

5 BASIC CAMPSITES A1-A5



Sites allow for parking of campervans, caravans and motor homes.

Kindly note that there are size restrictions which may be imposed on camping vehicles and equipment. Please contact the reserve office for further information.



POWER POINT including USB

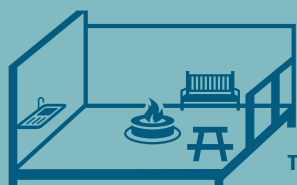


WATER POINT



BRAAI PLACE

9 DECKED CAMPSITES B1-B9



YOUR TENT HERE

Sites for pop-up tents, each complemented with individual spacious wooden decks and screens for privacy.

Also suitable for small to medium sized camping trailers, 4x4 trailers and trailer tents.



POWER POINT INCLUDING USB



SINK



FIRE PIT WITH GRID



PICNIC TABLE BENCH COMBO



BENCH



UMBRELLA



CAMPSITES A and B have a view of indigenous forest with opportunities for bird watching.

CAMPSITES A AND B SHARE THESE FACILITIES:

- Children's play area/jungle gym
- Communal ablution and scullery facilities



COMMUNAL



COMMUNAL



PLAY AREA



COMMUNAL



All overnight camping and glamping guests will be able to make use of the campsite swimming pool.

UNDER CONSTRUCTION

5 GLAMPING CAMPSITES

4



UNIVERSAL ACCESS ONLY AT RED ALDER



Red alder | Stinkhout | Sequoia | Boekenhout | Yellowwood

- Tents are structured and pitched on decks
- Situated apart from the main campsite (no shade)
- The 5 sites are screened off by a wooden fence divider
- Fully furnished for maximum comfort and convenience



BEDDING + TOWELS



FIRE PIT WITH GRID



3 POWER POINTS



TOILET



ROOFLESS SHOWER
Red alder, Stinkhout, Sequoia only



CLOSED SHOWER
Boekenhout, Yellowwood



TABLEWARE



FRIDGE



2-PLATE INDUCTION STOVE



MICROWAVE



COOKWARE



TOASTER



KETTLE

I BEDROOM



QUEEN SIZE

Single bed (L 1900mm) suitable for an adult with a pull-out bed (L 1700 mm) to accommodate a person with a maximum weight of 70kg



SINGLE DAY BED WITH PULL-OUT 2ND BED IN LIVING AREA

One camp bed available on request for an adult.

ACTIVITIES



DAY WALKS

- Bushbuck and Grysbok Trails
- From 10 – 15km



OVERNIGHT HIKING

- In the adjoining Boosmansbos Wilderness



BIRD WATCHING

- 2 bird hides
- More than 196 bird species regularly spotted at the reserve



CYCLING

- 6km cycle trail on the reserve
- MTB trails available on the adjacent Grootvadersbosch Conservancy Area (requires a permit, available from the Conservancy Office)



SWIMMING

- In the nearby Duiwenhoks River
- Swimming pool at cabins (cabin and camping guests only)



OUTDOOR GYM CHILDREN'S PLAY AREA

- At the campsite and the swimming pool, for the use of all overnight guests



BOOSMANSBOS WILDERNESS AREA

ADJACENT TO GROOTVADERSBOSCH

MAX
12
PER DAY



- Hikers should be well-equipped for difficult terrain, adverse weather conditions and must carry an accurate map of the area.
- As this is a Wilderness Area, there are multiple unmarked paths and hikers may choose their own routes.
- The circular two-day route of 27km is a popular option. This trail, most of which is an old jeep track, leads up to Loerklip with a basic shelter being provided at Helderfontein. No toilet facility is provided. The trail then winds back down Saagkuilkloof. If heavy rains are experienced during the hike it is advisable to return via the Loerklip path as the Duiwenhoks River may be in flood.
- Hikers should note that all refuse must be carried out and that fires are not permitted.



ADVANCE RESERVATIONS ARE ESSENTIAL

HIKING SAFELY

- Wear comfortable walking shoes, sunscreen and a hat.
- Do not hike alone.
- Stay in a group and on the trails.
- Carry enough food and water with you.
- Make sure you know what the weather conditions are before you depart.
- Take a warm jacket/raincoat in winter.
- Make sure you have a relevant map of the area.
- Take a field medical kit with you for emergencies.
- Obey all signage.



PLEASE NOTIFY THE WELCOME CENTRE STAFF ONCE YOU HAVE COMPLETED YOUR HIKE, SO THAT THEY KNOW YOU ARE SAFELY OFF THE TRAILS.

CHECKLIST: WHAT TO BRING



BOOKING CONFIRMATION

This is your entry permit



FOOD + DRINKS



BINOCULARS



TORCH



MATCHES



INSECT REPELLANT



SUNSCREEN



CHARCOAL



SUN HAT



WALKING SHOES



SWIMMING COSTUME



SWIMMING TOWEL



WARM JACKET / RAINCOAT
(Check weather forecast)



WATER BOTTLE

▼ GUESTS AT BASIC AND DECKED CAMPSITES ONLY ▼



BEDDING



CROCKERY, CUTLERY, COOKWARE



DISHWASHING LIQUID

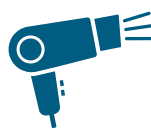


TOWELS

THESE ITEMS ARE AVAILABLE ON REQUEST FROM THE WELCOME CENTRE



IRON + IRONING BOARD



HAIRDRYER



BABY COT



THERE IS NO GROCERY SHOP ON THE RESERVE. FOOD, BEVERAGES AND OTHER PROVISIONS MUST BE BOUGHT BEFOREHAND.



FIREWOOD

Please check availability with the reserve office before arrival.

GROOTVADERSBOSCH RULES

PLEASE REMEMBER

You are in a nature reserve. No animals or plants may be damaged, removed or disturbed in any way.



There are baboons on the reserve. Safeguard your food and valuables.

DO NOT LEAVE DOORS AND WINDOWS OPEN OR ANY FOOD ITEMS IN SIGHT when not at the cabins and camp, caravan and tented sites. Baboons will cause major damage.



The reserve gate is locked from 18h00 to 07h00. Please be inside reserve before the gate closes.



The tap water is naturally brown and not polluted; however, it is advisable to boil it before drinking.



No credit card facilities available on the reserve. **ONLY CASH IS ACCEPTED.**



Visitors are liable for any loss or damage to reserve property due to negligence.



Keep the surrounds and facilities clean.



Prevent soil erosion by avoiding walking off the trails.



Make sure that all fires are extinguished before you leave or go to sleep.



Cell phone reception is sporadic on the reserve. In the event of an emergency, contact the manager/officer on duty on 082 496 2451.

THE FOLLOWING ARE PROHIBITED



LOUD MUSIC & ROWDY BEHAVIOUR



LITTERING



FEEDING OF ANY ANIMALS



DISTURBING OF ANY WILDLIFE



RE-ARRANGING FURNITURE & EQUIPMENT OR TAKING IT OUTDOORS



SMOKING IN UNITS



PETS



COLLECTING FIREWOOD



PICKING PLANTS

ARRIVAL & DEPARTURE [OVERNIGHT GUESTS]

ARRIVAL:
14h00 - 16h00



THIS IS YOUR
ENTRY PERMIT



RETURN ALL KEYS TO
THE WELCOME CENTRE
ON DEPARTURE

On the day of departure all overnight visitors must vacate the self-catering units and campsites by **10h00**, with the exception of visitors staying at the Basic Campsites A1-A5, who need to leave the campsites by **12h00**.

All overnight visitors are welcome to remain in the reserve until the gates close.



FOLLOW US ON SOCIAL MEDIA



CapeNatureI



@capenatureI



/capenatureI



@capenature