



CapeNature

# KOGELBERG NATURE RESERVE

Dear Client

**PLEASE NOTE**

**NO FIREWOOD  
IS ALLOWED**

due to the current risk  
of infestation of our  
trees by the Shothole  
Borer Beetle.



**RESERVATIONS 087 087 8250**



**087 288 0499 (office hours)**

NATURE RESERVE



**OFFICE HOURS 07h30 - 16h00  
7 days a week**



OVERNIGHT  
BOOKINGS

**CHECK-IN 14h00 - 16h00  
CHECKOUT 10h00**



DAY VISITORS

**CHECK-IN 07h30 - 15h00  
07h30 - 16h00**  
**CHECKOUT 18h00 19h00**  
*Winter Summer*



**GATE TIMES**  
**07h30 - 18h00** *Winter (April – August)*  
**07h30 - 19h00** *Summer (September - March)*



There are some places in the world which defy description. Anyone who has driven along the R44 between Rooiels and Kleinmond has likely been stunned into silence at the sight of the pristine wildness of the Kogelberg. The reserve presents perhaps the finest example of mountain fynbos in the Western Cape and is a world-renowned World Heritage Site. To put this in perspective, the Kogelberg is home to 150 endemic plant species, while the whole of the British Isles has 47. But it's not just a paradise for botanists.

Kogelberg's startling beauty casts a spell over visitors all year round, whether it is during the blazing heat of summer when a flash of green is an unexpected gift, or in rains and mists of winter when torrents of water cascade down rock faces that were bone-dry only weeks before. Considered by many to be the most beautiful of CapeNature's protected areas, Kogelberg Nature Reserve earns that reputation largely to the fact that it occupies an area with minimal human interference. Fourteen thoughtfully constructed eco cabins and pods allow visitors to nestle into the landscape without disrupting a place of unsurpassed floral diversity. CapeNature's commitment to conservation means guests will enjoy a seclusion and peace that might leave them at a loss for words.



From Cape Town, take the N2 north. Just before Sir Lowry's Pass, turn right on to Sir Lowry's Pass Road. At the T-junction in Gordon's Bay, turn left on to the R44, following Clarence Drive along the coast, past Pringle Bay and Betty's Bay. Just before you reach Kleinmond, the Kogelberg sign will direct you to turn left. Follow the paved road leading you to the reserve.

To view Kogelberg in Google maps, go to <https://www.google.com/maps> and insert these coordinates:  
**34 19 21.0 S 18 57 58.2 E**  
Then select "search" for the map to display.



# OUDEBOSCH SELF-CATERING ACCOMMODATION UNITS



**5x ECO CABINS**

**CAPACITY 4x**



DOUBLE

x1



SINGLE

x2

## Erica | Marsh Rose | Fire Lily | Iris | Everlasting Daisy

These glass fronted eco cabins afford occupants breath-taking views of the reserve. They sleep four people and consist of two bedrooms, one bathroom, one en-suite, and a spacious kitchen, lounge and dining area.

The cabins are named Erica, Marsh Rose, Fire Lily, Iris and Everlasting Daisy after endemic plant species found on the reserve. **NO WI-FI** available.



BEDDING + TOWELS



ELECTRICITY  
(ESKOM POWER  
INDIRECT SOLAR  
GEYSER)



BATHROOM  
(SHOWER ONLY)



'ECO LOO'  
(WATERLESS  
TOILET + BASIN)



BRAAI  
WITH GRID



INDOOR  
FIREPLACE



SHADED  
DECK



COMMUNAL  
POOL



EQUIPPED  
KITCHEN



TABLEWARE



FRIDGE



ELECTRIC OVEN  
WITH INDUCTION HOB



MICROWAVE



COOKWARE



TOASTER



INDUCTION  
KETTLE



**X1 HONEYMOON STUDIO  
PALMIET**

**CAPACITY X2**



X1 KING SIZE

The glass fronted studio sleeps two people and consists of open plan bedroom, lounge, dining and kitchen area with one bathroom.

**NO WI-FI** available.



BEDDING +  
TOWELS



INDOOR  
FIREPLACE



SHADED  
DECK



NO UNIVERSAL  
ACCESS



COMMUNAL  
POOL



BATH



BRAAI  
WITH GRID



ELECTRICITY  
(ESKOM POWER  
INDIRECT SOLAR  
GEYSER)



SHOWER

+



'ECO LOO'  
(WATERLESS  
TOILET + BASIN)



INDUCTION  
KETTLE



ELECTRIC STOVE  
WITH INDUCTION HOB



FRIDGE



COOKWARE



TABLEWARE



MICROWAVE



TOASTER

# MBALI SELF-CATERING ACCOMMODATION UNITS



**X3 ECO CABINS**

**CAPACITY 6x**



**DOUBLE  
x1**



**SINGLE  
x4**

**Silver Pagoda | Blue Stars | Pink Sugar Bush**

Glass fronted eco cabins afford occupants breath-taking views of the reserve. Three of the timber cabins sleep six people and consist of three bedrooms, one bathroom, one en-suite, and a spacious kitchen, lounge and dining area. **NO WI-FI** available.



**FAN**



**BEDDING  
+ TOWELS**



**ELECTRICITY  
(ESKOM POWER  
INDIRECT SOLAR  
GEYSER)**



**BATHROOM  
(SHOWER ONLY)**



**'ECO LOO'  
(WATERLESS  
TOILET + BASIN)**



**OUTSIDE BRAAI  
(WITH GRID)**



**SHADED STOEP**



**COMMUNAL  
POOL**



**INDOOR  
FIREPLACE**



**EQUIPPED  
KITCHEN**



**TABLEWARE**



**FRIDGE**



**2 PLATE  
INDUCTION HOB**



**DISHWASHER**



**COOKWARE**



**BUILT-IN MICROWAVE/  
CONVECTION OVEN**



**TOASTER**



**KETTLE**



**X5 ECO PODS**

**CAPACITY 2x**



**DOUBLE  
x1**

**Chincherinchee | Strooiblommetjie | Impepho  
Sundew | Golden Star**

Five glass fronted eco pods afford occupants breath-taking views of the reserve. Each unit sleeps two people and consists of open plan bedroom, lounge, dining and kitchen area with one bathroom. **NO WI-FI** available.



**FAN**



**BEDDING +  
TOWELS**



**INDOOR  
FIREPLACE**



**SHADED STOEP**



**NO UNIVERSAL  
ACCESS**



**COMMUNAL  
POOL**



**OUTDOOR BRAAI  
WITH GRID**



**ELECTRICITY  
(ESKOM POWER  
INDIRECT SOLAR  
GEYSER)**



**SHOWER**

**+**



**'ECO LOO'  
(WATERLESS  
TOILET + BASIN)**



**KETTLE**



**2 PLATE  
INDUCTION HOB**



**BAR FRIDGE/  
FREEZER**



**COOKWARE**



**TABLEWARE**



**BUILT-IN MICROWAVE/  
CONVECTION OVEN**



**TOASTER**

# CHECKLIST: WHAT TO BRING



THERE IS NO SHOP ON THE RESERVE.  
FOOD, BEVERAGES AND OTHER PROVISIONS  
MUST BE BOUGHT BEFOREHAND.



SUNHAT



FOOD + DRINKS



INSECT  
REPELLANT



WALKING  
SHOES



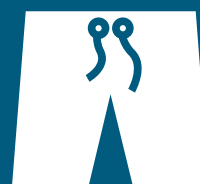
SUNSCREEN



TOILETRIES



DRINKING  
WATER

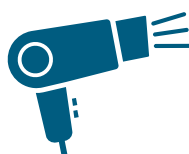


SWIMMING  
COSTUME

THESE ITEMS ARE AVAILABLE ON REQUEST FROM RECEPTION



IRON + IRONING BOARD



HAIRDRYER



BABY COT

# ACTIVITIES



**BIRD  
WATCHING**



**SWIMMING**



**HIKING**



**MOUNTAIN  
BIKING**



**WILDLIFE  
WATCHING**



**SA FOREST  
ADVENTURES**



**GRAVITY  
ADVENTURES**

# KOGELBERG RULES

THE FOLLOWING ARE PROHIBITED:



**PICKING PLANTS**



**PETS**



**ROWDY BEHAVIOUR**



**DISTURBING OF  
ANY WILDLIFE**



**LITTERING**



**COLLECTING  
FIREWOOD**



**LOUD MUSIC**



**FEEDING OF ANY  
ANIMALS**



**THROWING CIGARETTE  
BUTTS INTO THE VELD**



**TAKING FURNITURE  
EQUIPMENT OR UTENSILS  
OUT OF THE CABIN**

# PLEASE REMEMBER



Keep the surrounds  
and facilities clean.



Please bring your  
own firelighters.



Fires may only be made in designated  
fireplaces. A fire danger index board is  
located at the main office.



Avoid light pollution –  
do not leave outside  
lights on all night.



Make sure that all fires are  
extinguished before you  
leave or go to sleep.



Keep all noise to a  
minimum after 22h00.



All swimmers need to  
shower before swimming  
in the eco-pool.



Please do not take hot coals  
from the braai area to the  
indoor fire place.



Visitors are liable for any loss or damage to  
reserve property due to negligence.

## MEDICAL EMERGENCIES:



After Hours: 16h00 - 07h30

- 1) Remain calm and exit the reserve as quickly as possible, in order to make your emergency call.  
The Town's emergency contact numbers are detailed on the evacuation plan, in your cabin. Cell phone reception is available on the municipal roads, upon exit of the reserve.
- 2) If you are unable to exit the reserve, contact the Conservation Manager or the Tourism Liason Officer or the Security Office, on the reserve. The locations are detailed on the evacuation map, which can be found in your cabin.

## MAINTENANCE EMERGENCIES:



After Hours: 16h00 - 07h30

- 1) Report any urgent repair issue/s to the Security Office, located in the trailer close to the on-reserve reception office.

## ARRIVAL & DEPARTURE

ARRIVAL:  
**14h00 - 16h00**



THIS IS YOUR  
**ENTRY PERMIT**



RETURN ALL KEYS  
TO THE WELCOME CENTRE  
ON DEPARTURE

On the day of departure, visitors are welcome to remain in the reserve for hiking and mountain biking until the gates close, but should park at the reserve office.



FOLLOW US ON SOCIAL MEDIA



CapeNature |



@capenature |



/capenature |



@capenature