

SIDES metres	ANGLES OF DIRECTION	CO-ORDINATES		
		Y	System: WG 21°	X
		Constants +0,00 +3 700 000,00		
A B	95,72 278.20.50	A	-44 823,41	+40 784,54
B C	1 484,08 299.00.57	B	-44 918,11	+40 798,44
C D	812,05 334.18.30	C	-46 215,92	+41 518,30
D E	1 042,49 288.39.08	D	-46 567,98	+42 250,06
E F	2 235,07 347.17.03	E	-47 555,71	+42 583,48
F G	1 033,31 77.02.24	F	-48 047,69	+44 763,73
G H	389,25 77.17.30	G	-47 040,70	+44 995,47
H A	4 673,01 156.50.40	H	-46 660,98	+45 081,09

SG No.
1896/2009

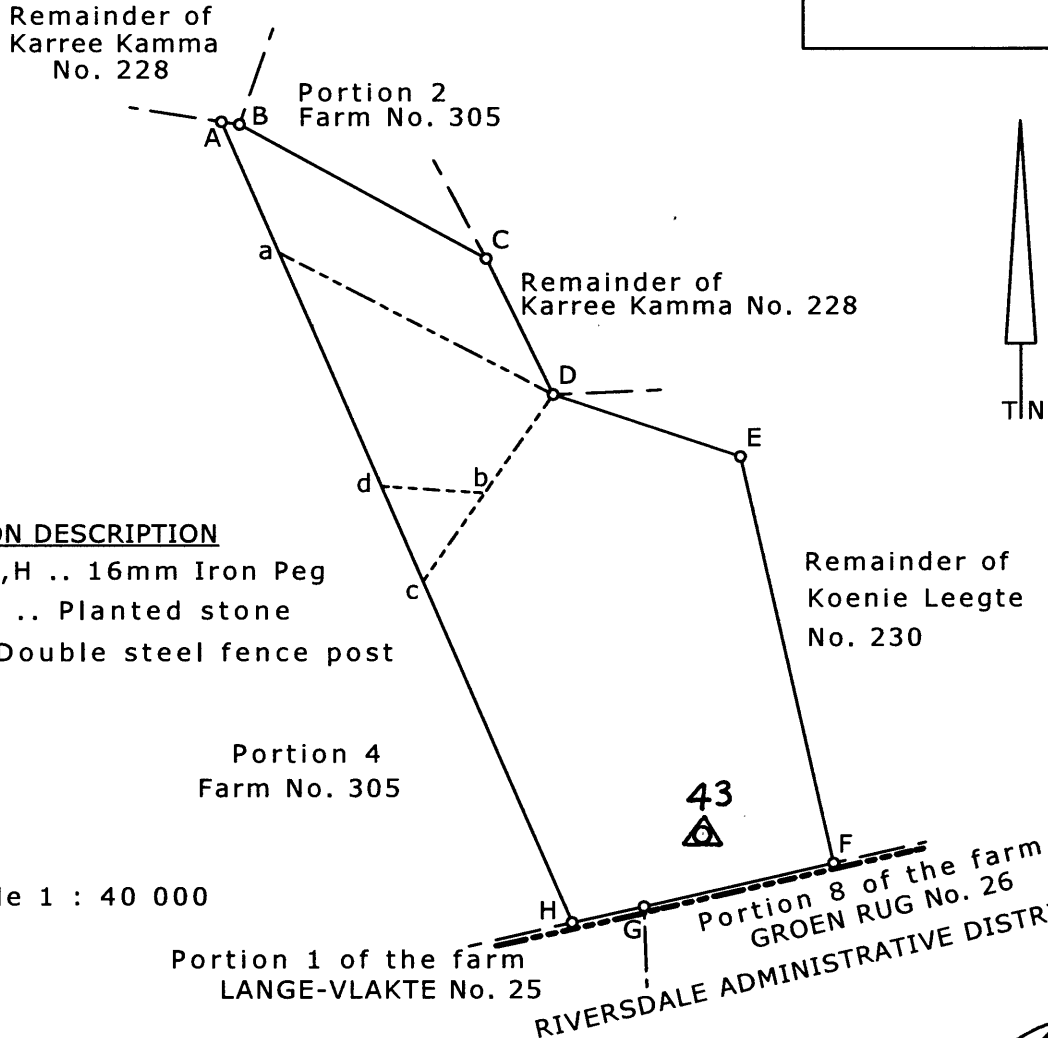
Approved

Stow Abong

for
SURVEYOR-
GENERAL

26 MAY 2009

TRIGONOMETRICAL DATA			
Kunigleegte	(43)	▲	-47 346,37 +44 594,96
Lad 25	(144)	▲	-42 571,93 +41 006,82



BEACON DESCRIPTION

- A, C, F, H .. 16mm Iron Peg
- B, E .. Planted stone
- G .. Double steel fence post

Scale 1 : 40 000

The Figure A B C D E F G H represents 577,9998 hectares of land being
Portion 5 of FARM No. 305

Situate in the Kannaland Municipality
Administrative District of Ladismith
Province of Western Cape
Surveyed in January - February 2009

[Signature]
by me T.A. Theron
Professional Land Surveyor
Registration No. PLS 0874

THIS PORTION IS SUBJECT TO
CONDITIONS REFERRED TO IN
SECT. 11 (6) OF ACT 21/1940.

APPROVED IN TERMS OF SECT. 25
OF ORD. 15/1986

REF 15/413
DATE 2008/11/05

APPROVED IN TERMS OF SECT. 4
OF ACT 70/1970

REF 4378/
DATE 05/11/2008

This diagram is annexed to No. T 70203/2010 d.d. i.f.o.	The original diagram is No. 1891/2009 Transfer	File Ldsm 305 S.R. 700/2009 Comp. BK-7B (4040) BK-8A (4046) LPI CO420000 Farm 305/5 Ladismith
--	--	--

Registrar of deeds

Farm 305/5 Ladismith