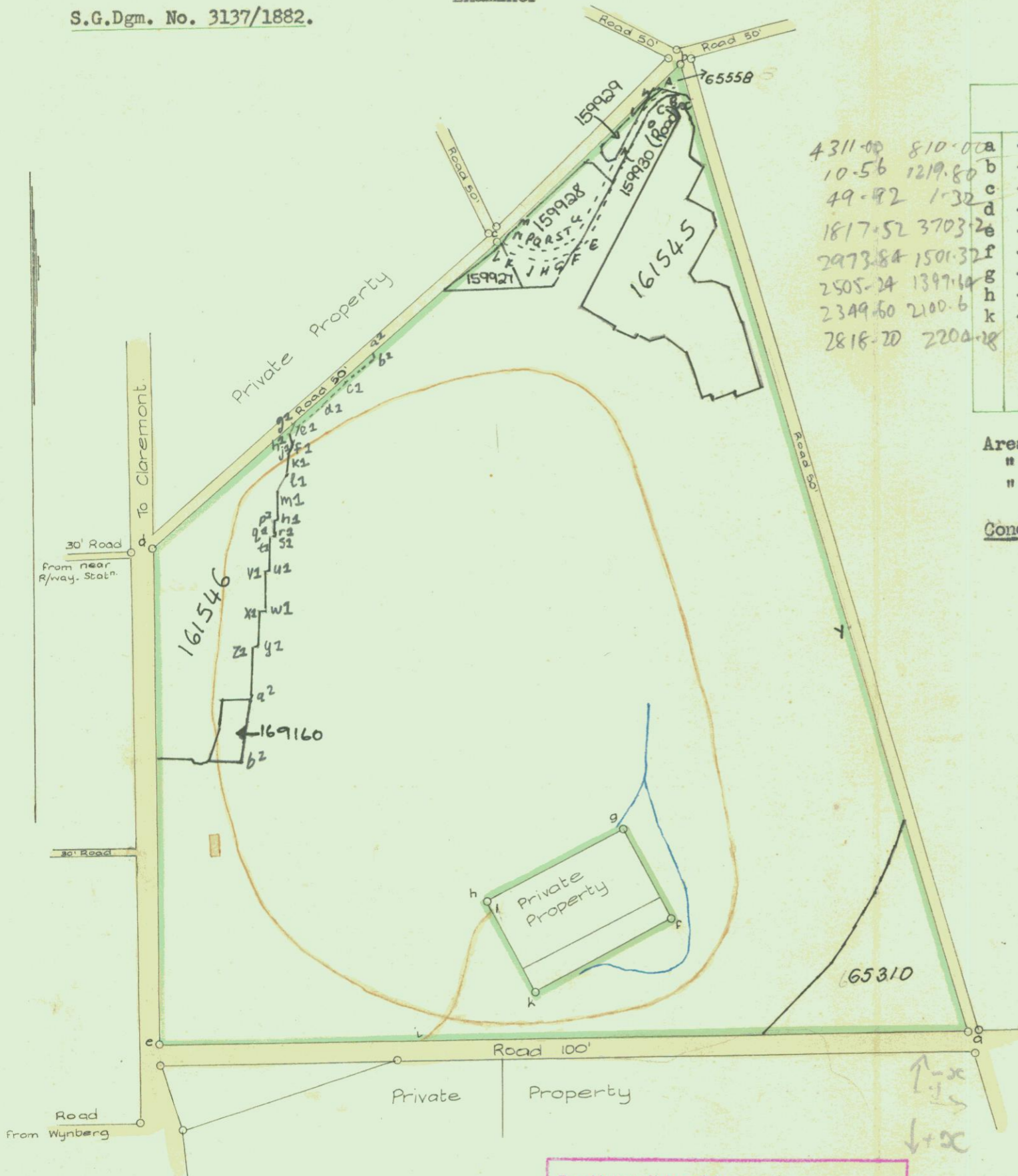


The numerical data of this diagram are sufficiently consistent.

(Sgd.) Max Jurisch
Examiner

S. G. Dgm. No. 3137/1882

S.G.Dgm. No. 3137/1882.



21 = ab - 1503,30M
= 1503,30M
21 = 71585,7102

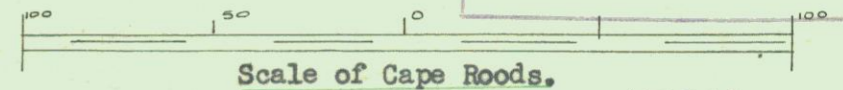
4311.00 810.00
10.56 1219.80
49.92 1.32
1817.52 3703.2
2973.84 1501.32
2505.24 1397.64
2349.60 2100.6
2818.20 2204.28

Co-ordinates		Sides		Angles	
a	- 359.25 + 67.50	ab	397.88	a	74.24.10
b	+ 0.88 - 101.65	bc	101.67	b	62.0.0
c	- 4.16 - 0.11	cd	180.95	c	182.50.30
d	- 4.16 + 180.84	de	194.99	d	130.56.10
e	- 151.46 + 308.60	ea	318.28	e	89.49.10
f	- 247.82 + 125.11	fg	40.00	f	270.0.0
g	- 208.77 + 116.47	gh	60.00	g	270.0.0
h	- 195.80 + 175.05	hk	40.00	h	270.0.0
k	- 234.85 + 183.69	kf	60.00	k	270.0.0
		fa	125.44	afk	129.49.10
		ke	150.19	fke	201.14.50
				kea	7.1.40
				eaf	21.54.20

Area of fig. a-e 135^M-15^{SR}
" " " f-k 4-0
" on the ground 131-15

Condition. A road must be reserved to give access to the farm f - k.

ERF 65238 CAPE TOWN
at Kenilworth



Scale of Cape Roads.

1:7500

112,2271 ha

The above figure a - e surrounding the figure f.g.h.k. represents 131 Morgen 15 Square Rods of ground, situate in the Cape Division, Field Cornetcy of Newlands on the Claremont Flats.

Bounded North by a Road 50' wide
East " Do. Do.
South " Do. 100' wide
West " Do. Do.

Framed from actual Survey,
(Sgd.) Wm. de Smidt Junr.
Gov. Land Surveyor.
24 November 1882.

Note: The land f g h k is Quitrent granted 3rd January, 1815 to Moses Eyssen.

Copied from the diagram relating to
- Title Deed No. C. F. 18. 1.
dated 18th December 1882 in favour of
Chairman in Trust for Jockey Club
W. G. Hardwick
for SURVEYOR-GENERAL,
CAPE TOWN.
4. 6. 1951.

Road letters along Bdy. x.y
closed. Vide T/C's Notice d.d. 1993-05-25
File S. 19996/48 p. 72
R.A.F.
for SURVEYOR-GENERAL DATE 1993.07.09

Cape Town Sheet N 18.

Vol. 18. AH 18B
V52 & V51

M 3160

M 1426

ERF 65238
Comp. 253
Ref. C6

FOR ENDORSEMENTS
SEE BACK OF DIAGRAM

BS

M. P.