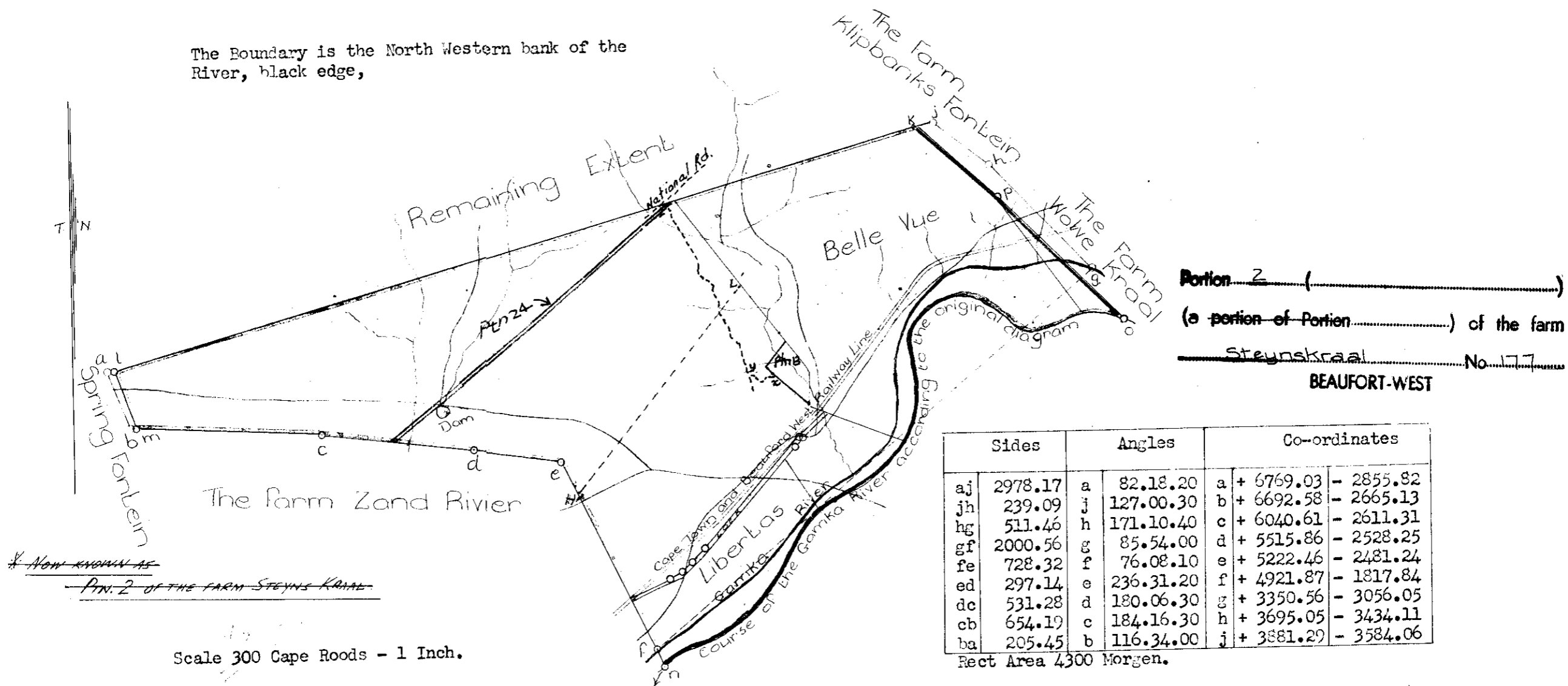


The numerical data of this diagram are sufficiently consistent.
 S.G. Dgm. No. 963/1895. (Sgd) J.J. Bosman
 Examiner.

The Boundary is the North Western bank of the
 River, black edge,



The above diagram k.l.m.c.d.e.n. River o.p. represents 4255 Morgen 200 Square Roods of land, situate in the Field-cornetcy of Gouph No 4 Division of Beaufort West being a portion of the farm Steyns Kraal, granted to J.G. Mocke, T.J. son on the 1st November 1838 and last transferred to D.G. de Villiers on the 5th day of July 1877.

Bounded N by the Remaining Extent
 NE " the Farms Klipbanks Fontein and Wolve Kraal
 SE " the Gamka River
 SW & S " that portion of the Farm Steyns Kraal now named Zand River
 W " th Farm Spring Fontein

Surveyed by me, August 1894
 (Sgd) Wm. de Smidt
 Government Land Surveyor.

THE FOLLOWING BEACONS,
 BOUNDARIES ESTABLISHED
 Vid. BH 024/1911

Transfer 5049

2nd September 1895

Hendrik P.J. van Veuren.

Hendrik P.J. van Veuren

(4582) 4590

CL - 3D, 5B.

S

963/1895

177/2

Ptn. 3
" 4
" 6
" 13.

E 81/62	1742/1914	Belle Vue
E 938/2004	1869/1914	Libertas
	A1933/1925	Lot R
	291/1962	PTN. 13
	2097/2004	PTN 24

		Rds.		
1207	200	5/10/1915	6409	
291		do	6410	
10	525	29/6/1926	6235	
21,9957 Ha.		41853/74		
15,2195				

Rem

2314, 9287 Ha

E 81/62 291/62 41853/74

The black line xyz represents a Serv. Road, 20' wide up to its junction with the National Rd. Filed vide 177/13

E 723/63 2752/63 The line H'L represents the centre line of an Electric Co's Power Line Servitude 53A/69 Filed vide 178/3

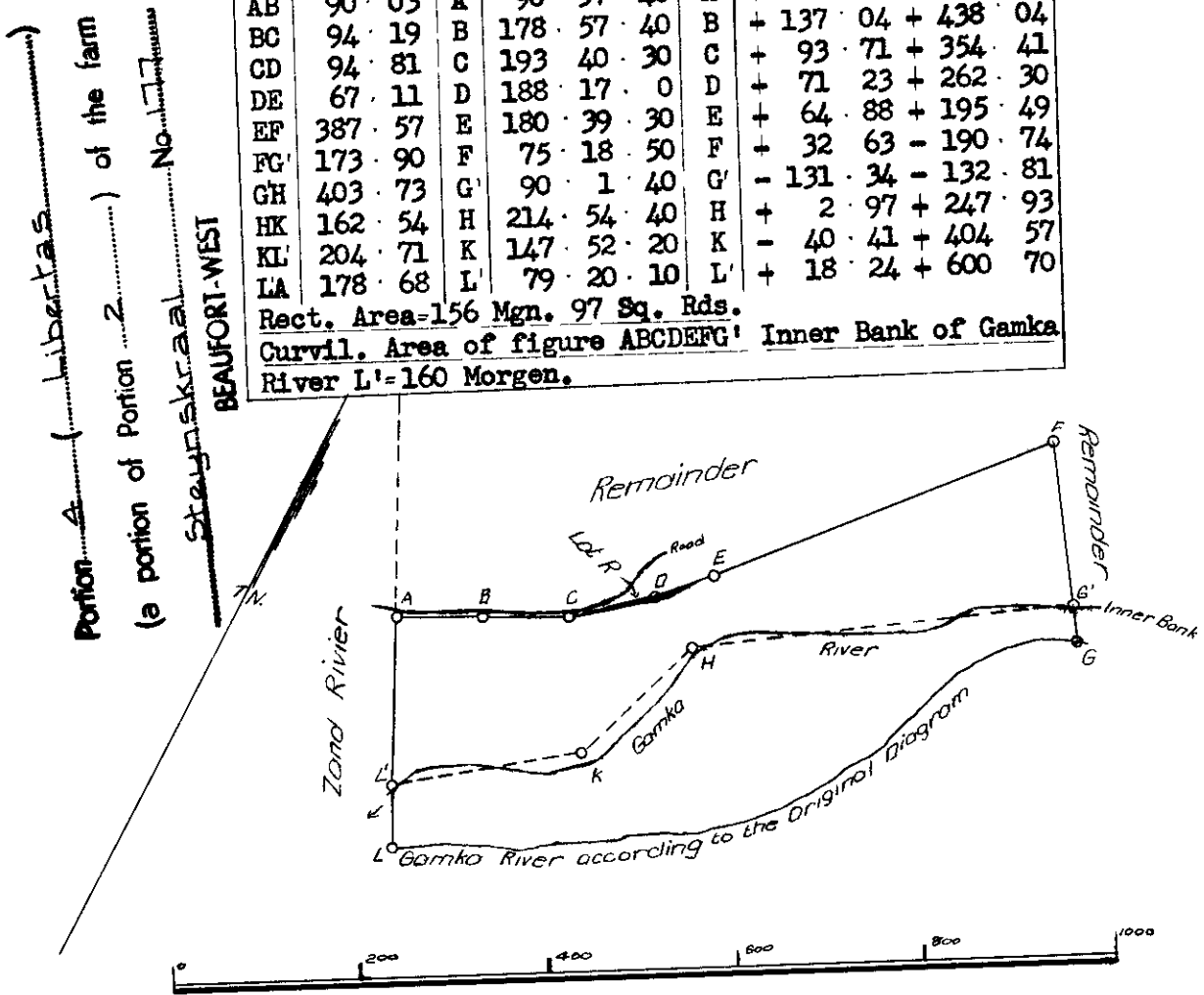
B

Deducted No. 2518
 (Sgd.) F.F. Elliott
 for Surveyor-General
 July 27th 1914.

S.G. Dgm. No. 1869/1914.

Sides.		Angles.		Co-ordinates.	
				$y's$	$x's$
AB	90.03	A	90.57.40	A	+ 177.00 + 518.72
BC	94.19	B	178.57.40	B	+ 137.04 + 438.04
CD	94.81	C	193.40.30	C	+ 93.71 + 354.41
DE	67.11	D	188.17.0	D	+ 71.23 + 262.30
EF	387.57	E	180.39.30	E	+ 64.88 + 195.49
FG	173.90	F	75.18.50	F	+ 32.63 - 190.74
GH	403.73	G	90.1.40	G'	- 131.34 - 132.81
HK	162.54	H	214.54.40	H	+ 2.97 + 247.93
KL	204.71	K	147.52.20	K	- 40.41 + 404.57
LA	178.68	L'	79.20.10	L'	+ 18.24 + 600.70

Rect. Area = 156 Mgn. 97 Sq. Rds.
 Curvil. Area of figure ABCDEFG' Inner Bank of Gamka River L' = 160 Morgen.



Scale: 200 Cape Roods = 1 Inch.

The above diagram lettered A. B. C. D. E. F. G. Gamka River (Inner Bank of) L represents 291 morgen of land situate in the Field-Cornetcy of Gouph No. 4 Division of Beaufort West, being Portion "Libertas" of that part of the farm Steyns Kraal transferred to H.P.J. van Veuren on 2nd Sept. 1895.

Bounded NWds. by Remainder
 NE " " Remainder
 SE " " Gamka River (Inner Bank of)
 SW " " Zand Rivier.

Surveyed and beaconed by me according to regulations.
 (Sgd.) A.I. de Villiers.
 Government Land Surveyor.
 June, 1914.

Transfer ——— 6410
 5th October 1915.
 Alfred. I. de Villiers.

Alfred I. de Villiers

58.
 3D

. diagram.	
	Tr. No.

Am. 6

A1933/1925

Lot R

60

29.6.1926

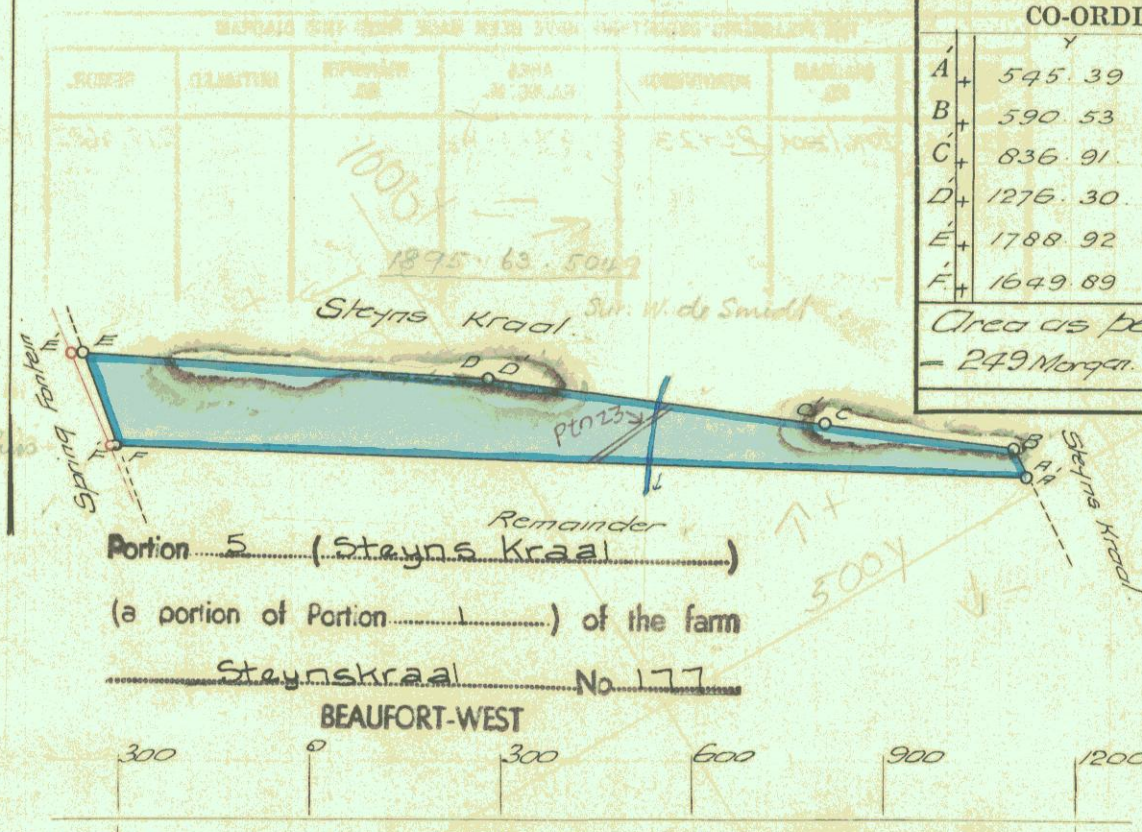
6235

Data for transfer.				Survey Data			
Angles.		Sides		ANGLES		SIDES	
A.	62. 10. 30	AB.	48. 87.	A'	62 10 10	A'B'	48. 87.
B	123. 28. 40	BC	297. 14	B	123 29 0	B'C'	297. 19
C	179. 53. 30	CD	531. 28	C'	179 50 40	C'D'	530. 97
D	175. 43. 30	DE	638. 00	D'	175 42 50	D'E'	654. 49
E	65. 0. 0	EF	150. 66	E'	62 48 10	E'F'	152. 62
F	113. 43. 50	FA	1424. 54	F'	115. 59 10	F'A'	1434. 55

CO-ORDINATES		
	Y	X
A'	545. 39	526. 70
B'	590. 53	507. 99
C'	836. 91	674. 18
D'	1276. 30	972. 30
E'	1788. 92	1379. 19
F'	1649. 89	1492. 14

Area as per beacons
= 249 Morgen. 598 Sq. Rds.

True North.



Portion 5 (Steyns Kraal) (a portion of Portion 1) of the farm Steynskraal No. 177

BEAUFORT-WEST

300 0 300 600 900 1200

Scale 300 Cape Roods = 1 inch

The above figure ABCDEF. 1, 4462 S represents 247 Morgen, 582. Square Roods, ✓ Square Feet of land, situated in the Division of Beaufort West being portion Steyns Kraal A. of the farm. Land Rivier transferred to P.J. O'Connell on 26th Nov. 1875.

Bounded as indicated above

Surveyed and beaconsed by me according to regulations

J. J. de Villiers

Government Land Surveyor.

January 1925.

CL-3D.

This Diagram belongs to the transfer deed issued this day, in favour of *A. J. de Villiers*

14.8.25.7745.

Registrar of Deeds.

A 635- 1925.

Report on Survey of "Steynskraal A"
portion of "Zand Rivier" Division of Beaufort West.

The beacons lettered A.B.C.D.E.F (diagram of Zand Rivier) were pointed out to me by the owner of Zand Rivier and by the owners of the adjoining properties; in my opinion the beacons so pointed out are true and correct. Beacons A.B.C.D.E are Cairns of Stones 3' in height by 3' in diameter; Beacon F is a Cairn of Stones 5' in height by 6' in diameter.

J. D. de Villiers.

Steynskraal.

P.O. Klipbank Rail.

17th Feby. 1925.